

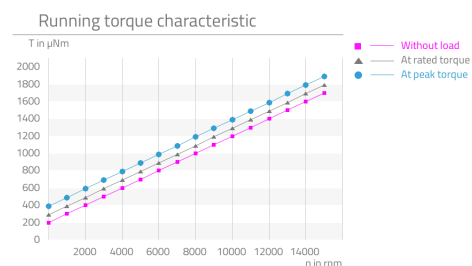


Attributes

Highlights	Description
<ul style="list-style-type: none"> ▪ Fast delivery ▪ High repeatability ▪ Zero backlash with ultra high transmission ratio ▪ Sterilizable ▪ Preloaded ball bearing 	<p>The MaalonDrive® MedTec 13mm - type 1 micro positioning gear can be fully sterilised and is equipped with an extremely durable output bearing. It was specially designed for use in medical technology. Located on both the input side as well as on the output side are preloaded ball bearings by means of which the application can be directly connected. At the heart of this extremely high-reduction and zero-backlash micro gearbox is a MaalonDrive® gear with a reduction ratio of 1000:1 in just a single stage.</p>

Technical parameter

P-029



Technical Supply Specifications: MaalonDrive® MedTec 13mm - Type 1



Micromotion GmbH, Phone: +49 (0) 6431 – 569 18 – 25, E-mail: sales@micromotion.de

Nr.	Parameter	Symbol	Value	Hint
P-002	Sterilizable		yes	
P-003	Ratio	i	1000 : 1	
P-004	Self-locking		yes	
P-008	Repeatability unidirectional		15 arcsec	
P-009	Repeatability bidirectional		30 arcmin	
P-010	Accuracy		15 arcmin	
P-011	Transmission accuracy		30 arcmin	
P-013	Torsional stiffness		3.80 $\frac{\text{Nm}}{\text{rad}}$	
P-014	Lost motion		30 arcmin	
P-015	Backlash		0 arcmin	
P-016	Rated torque	T	9 mNm	
P-017	Peak torque	T	19 mNm	
P-018	Momentary peak torque	T	47 mNm	
P-021	Rated input speed	n	10000 rpm	
P-022	Maximum input speed	n	30000 rpm	
P-023	Rated output speed	n	10 rpm	
P-024	Maximum output speed	n	10 rpm	
P-026	No-load starting torque	T	300 μNm	
P-027	No-load running torque	T	200 μNm	
P-028	Rated running torque	T	1440 μNm	
P-034	Lifetime for rated operation		500 h	
P-035	Radial backlash output shaft		0 μm	
P-036	Axial backlash output shaft		0 μm	
P-037	Radial stiffness	c	5.07 N/ μm	
P-038	Axial stiffness	c	70.5 N/ μm	
P-039	Max. radial load on output shaft (non-operating, constant load)	F	115 N	
P-040	Max. radial load on output shaft (non-operating, impulsive load)	F	40 N	
P-041	Max. radial load on output shaft (operating, constant load)	F	16 N	
P-042	Max. radial load on output shaft (operating, impulsive load)	F	16 N	
P-043	Max. axial load on output shaft (non-operating, constant)	F	272 N	
P-044	Max. axial load on output shaft (non-operating, impulsive load)	F	90 N	

Technical Supply Specifications: MaalonDrive® MedTec 13mm - Type 1



Micromotion GmbH, Phone: +49 (0) 6431 – 569 18 – 25, E-mail: sales@micromotion.de

Nr.	Parameter	Symbol	Value	Hint
P-045	Max. axial load on output shaft (operating, constant load)	F	705 N	
P-046	Max. axial load on output shaft (operating, impulsive load)	F	242 N	
P-047	Max. radial load on input shaft (non-operating, constant load)	F	15 N	
P-048	Max. radial load on input shaft (non-operating, impulsive load)	F	6 N	
P-049	Max. radial load on input shaft (operating, constant load)	F	12 N	
P-050	Max. radial load on input shaft (operating, impulsive load)	F	6 N	
P-051	Max. axial load on input shaft (non-operating, constant load)	F	30 N	
P-052	Max. axial load on input shaft (non-operating, impulsive load)	F	10 N	
P-053	Max. axial load on input shaft (operating, constant load)	F	100 N	
P-054	Max. axial load on input shaft (operating, impulsive load)	F	38 N	
P-055	Moment of inertia	I	55 * 10 ⁻⁴ gcm ²	
P-056	Weight	m	11 g	
P-057	Min. permissible ambient temperature (non-operating)	T	-80 °C	
P-058	Min. permissible ambient temperature (operating)	T	-10 °C	
P-059	Max. permissible ambient temperature (non-operating)	T	150 °C	
P-060	Max. permissible ambient temperature (operating)	T	120 °C	

Material information

Nr.	Parameter	Symbol	Value	Hint
P-900	RoHS compliant		yes	
P-901	Lubrication of output bearing gearbox		BarriertaL55/2	
P-902	Lubrication of input bearing gearbox		BarriertaL55/2	
P-903	Lubrication of gear component set		BarriertaL55/2	
P-908	Material of gear component set		NiFe	
P-909	Material of output bearing gearbox		1.4108 DIN EN	
P-910	Material of input bearing gearbox		1.4108 DIN EN	

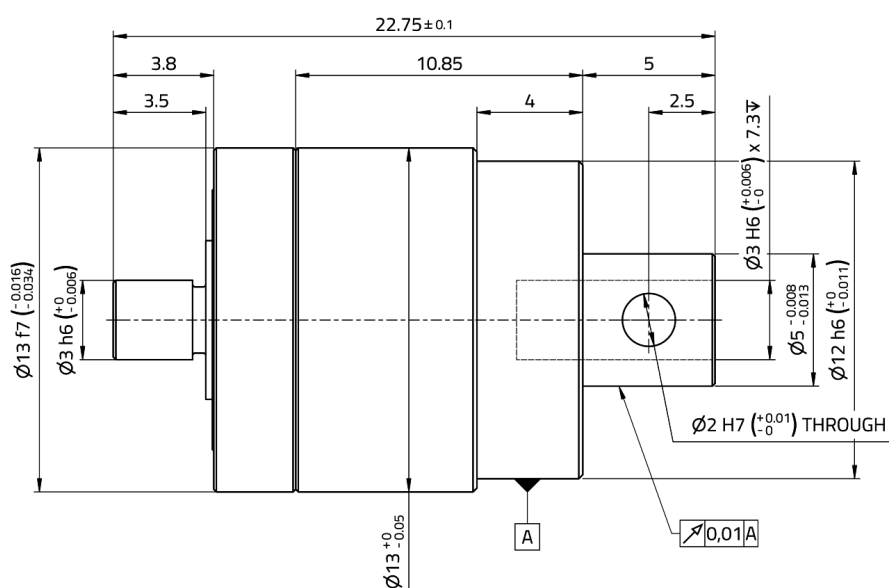
Technical Supply Specifications: MaalonDrive® MedTec 13mm - Type 1



Micromotion GmbH, Phone: +49 (0) 6431 – 569 18 – 25, E-mail: sales@micromotion.de

Nr.	Parameter	Symbol	Value	Hint
P-912	Material of gearbox output side		1.4301 DIN EN	
P-913	Material of gearbox input side		1.4305 DIN EN	

Technical drawing



Micromotion GmbH | Hoenbergstraße 14 | 65555 Limburg
+49(0)6431-59618-25 | sales@micromotion.de | www.micromotion-drives.com